

Архангельск (8182)63-90-72
Астана (7172)727-132
Астрахань (8512)99-46-04
Барнаул (3852)73-04-60
Белгород (4722)40-23-64
Брянск (4832)59-03-52
Владивосток (423)249-28-31
Волгоград (844)278-03-48
Вологда (8172)26-41-59
Воронеж (473)204-51-73
Екатеринбург (343)384-55-89
Иваново (4932)77-34-06

Ижевск (3412)26-03-58
Иркутск (395)279-98-46
Казань (843)206-01-48
Калининград (4012)72-03-81
Калуга (4842)92-23-67
Кемерово (3842)65-04-62
Киров (8332)68-02-04
Краснодар (861)203-40-90
Красноярск (391)204-63-61
Курск (4712)77-13-04
Липецк (4742)52-20-81
Киргизия (996)312-96-26-47

Магнитогорск (3519)55-03-13
Москва (495)268-04-70
Мурманск (8152)59-64-93
Набережные Челны (8552)20-53-41
Нижний Новгород (831)429-08-12
Новокузнецк (3843)20-46-81
Новосибирск (383)227-86-73
Омск (3812)21-46-40
Орел (4862)44-53-42
Оренбург (3532)37-68-04
Пенза (8412)22-31-16
Казахстан (772)734-952-31

Пермь (342)205-81-47
Ростов-на-Дону (863)308-18-15
Рязань (4912)46-61-64
Самара (846)206-03-16
Санкт-Петербург (812)309-46-40
Саратов (845)249-38-78
Севастополь (8692)22-31-93
Симферополь (3652)67-13-56
Смоленск (4812)29-41-54
Сочи (862)225-72-31
Ставрополь (8652)20-65-13
Таджикистан (992)427-82-92-69

Сургут (3462)77-98-35
Тверь (4822)63-31-35
Томск (3822)98-41-53
Тула (4872)74-02-29
Тюмень (3452)66-21-18
Ульяновск (8422)24-23-59
Уфа (347)229-48-12
Хабаровск (4212)92-98-04
Челябинск (351)202-03-61
Череповец (8202)49-02-64
Ярославль (4852)69-52-93

<https://twintex.nt-rt.ru/> || ttw@nt-rt.ru

Programmable Single Output DC Power Supplies



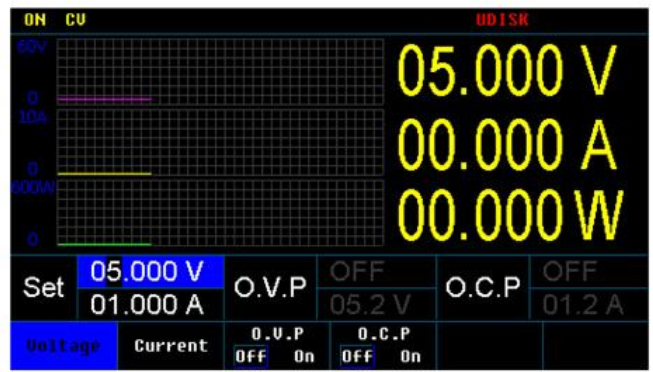
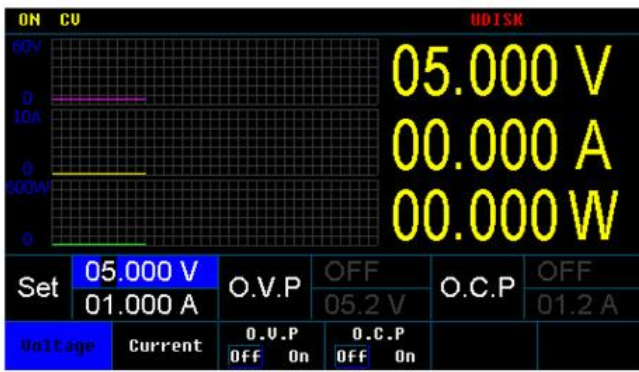
Product No : PPS__Series

Product Description

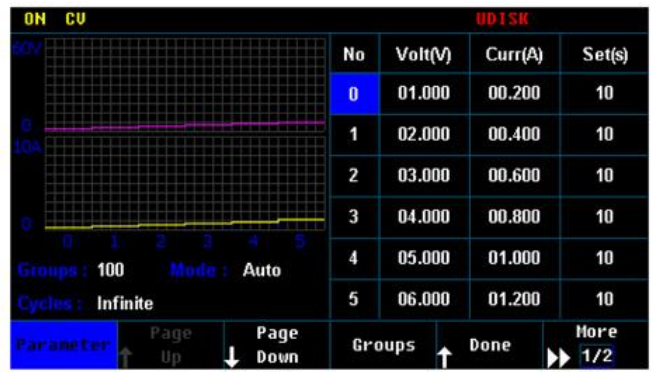
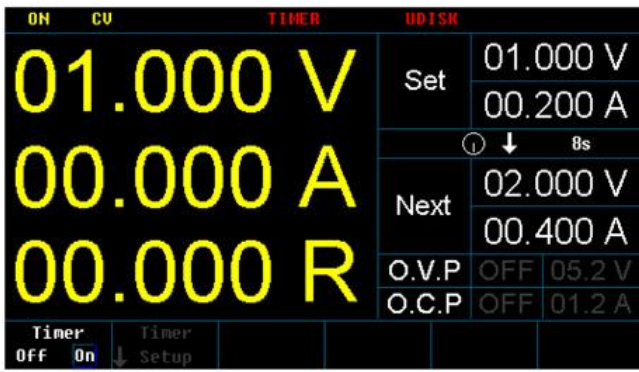
PPS series are high accuracy programmable DC power supply with single output. MPU control, RS-232/RS-485/USB interface for PC control, the PPS series facilitates auto test and auto control. The commands of the PPS series are compliant with SCPI commands. Users can easily develop programs to facilitate different applications in auto test and auto control. Users can also store or recall data via the USB host on front panel.

The 4.3-inch TFT LCD display gives full display for parameters and output waveforms. Digital input fulfilled by rotary dial and keypad input makes input fast and accurate. Voltage and current regulations by software, avoids human error and makes the PPS series more accurate.

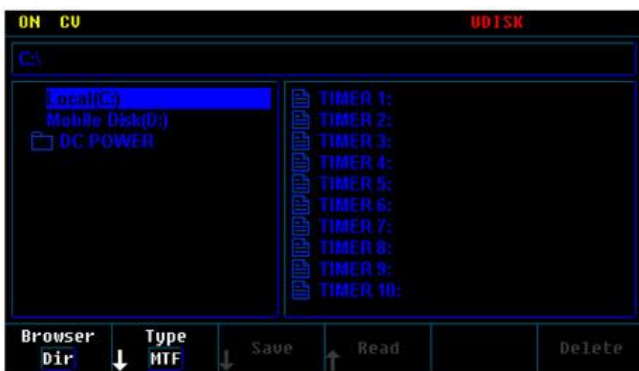
- ★ High accuracy, high resolution
- ★ Over load, over voltage, over current, over temperature and reverse polarity protections
- ★ Constant voltage and constant current operations, auto CV and CC switch
- ★ 4.3-inch TFT LCD display
- ★ High speed rotary dial and keypad input
- ★ Built-in beeper alarm
- ★ Panel lock and output ON/OFF function
- ★ List mode function, 300 sets save & recall for voltage, current and time setups, easy use in auto test
- ★ Remote sense function
- ★ Display load resistance value
- ★ Battery charge mode
- ★ Standard USB host interface for data storage and recall from external USB flash driver
- ★ Standard RS-232 interface, support SCPI commands, support Labview
- ★ Standard 0-5V analog control
- ★ Optional RS-485 interface, support Modbus
- ★ Optional RS-232 to USB cable



4.3-inch TFT LCD screen for full parameters and waveform display.

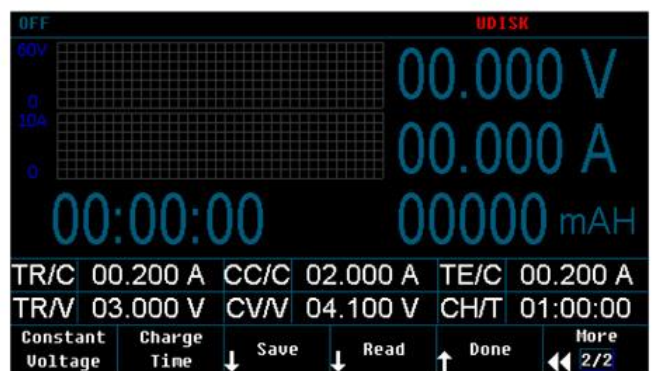
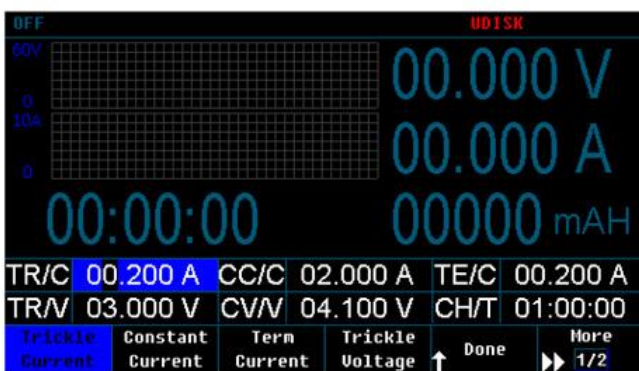


Set TIMER on to set running time, number of groups & cycle, and running mode.



Save & Recall settings

System settings



Settings for battery charge

Specifications (300W/600W)

Model	PPS-3010	PPS-2030	PPS-3020	PPS-6010	PPS-8008
Rated output (0°C~40°C)					
Voltage	0~31V	0~20.5V	0~31V	0~60.5V	0~80.5V
Current	0~10.5A	0~30.5A	0~21A	0~10.5A	0~8.0A
Power	0-300W	0-600W	0-600W	0-600W	0-600W
O.V.P	0.1~34V	0.1~24V	0.1~34V	0.1~64V	0.1~88V
O.C.P	0.1~24A	0.1~34A	0.1~24A	0.1~12A	0.1~8.8A
Constant Voltage Operation					
Line regulation	≤0.01%+4mV				
Load regulation	≤0.1%+5mV				
Ripple & Noise(20Hz~20MHz)	≤2mVrms, 30mVpp				
Recovery time	≤1.5ms (50% load change)				
Temperature Coefficient	≤100ppm/°C				
Constant Current Operation					
Line regulation	≤0.1%+3mA				
Load regulation	≤0.1%+5mA				
Ripple & Noise	≤10mArms				
Display					
Voltmeter	5 digits LCD display				
Ammeter	5 digits LCD display				
Setting resolution	1mV/1mA				
Reading resolution	1mV/1mA				
Setting accuracy (25±5°C)	Voltage	±(0.03% of reading + 10mV)			
	Current	±(0.1% of reading + 0.1% of FS)			
Reading accuracy (25±5°C)	Voltage	±(0.02% of reading +5mV)			
	Current	±(0.1% of reading + 0.1% of FS)			
General					
Protection	Over load, over voltage, over current, over temperature and reverse polarity protections				
Panel lock	Provided				
Remote sense function	Maximum compensation voltage 5% of FS				
Battery charge	Lithium battery curve charge				
Interface	RS232 interface, Support SCPI commands				
	0-5V analog control				
	Optional RS485 interface, supportModBus				

	Optional RS232 to USB cable
Memory	300 sets internal save, support save to USB flash driver
Insulation	Between base and terminals: $\geq 20\text{M}\Omega/500\text{VDC}$ Between base and AC line: $\geq 30\text{M}\Omega/500\text{VDC}$
Operating environment	Indoor use Altitude: $\leq 2000\text{m}$ Ambient temperature: $0\sim 40^{\circ}\text{C}$ Relative humidity: $\leq 80\%$ Installation category: II Pollution degree: 2
Storage environment	$-10^{\circ}\text{C}\sim 70^{\circ}\text{C}$, $\leq 70\%\text{RH}$
Power source	AC220V $\pm 10\%$, 50/60Hz
Accessories	Power cord x1, Operation manual x1, RS232 cable x1, Software CD x1
Dimension(WxHxD)	215x89x352mm
Weight	4.5kg

Specifications (900W)

Model	PPS-1560	PPS-2045	PPS-3030	PPS-3625	PPS-4520
Rated output (0°C~40°C)					
Voltage	0~15.5V	0~20.5V	0~31V	0~36.5V	0~45.5V
Current	0~60.5A	0~45.5A	0~31A	0~25.5A	0~20.5A
Power	0-900W	0-900W	0-900W	0-900W	0-900W
O.V.P	0.1~18V	0.1~24V	0.1~34V	0.1~40V	0.1~55V
O.C.P	0.1~62 A	0.1~50A	0.1~34A	0.1~27.5A	0.1~22A
Constant Voltage Operation					
Line regulation	$\leq 0.01\%+4\text{mV}$				
Load regulation	$\leq 0.1\%+5\text{mV}$				
Ripple & Noise(20Hz~20MHz)	$\leq 2\text{mVrms}$, 30mVpp				
Recovery time	$\leq 1.5\text{ms}$ (50% load change)				
Temperature Coefficient	$\leq 100\text{ppm}/^{\circ}\text{C}$				
Constant Current Operation					
Line regulation	$\leq 0.2\%+3\text{mA}$				
Load regulation	$\leq 0.2\%+5\text{mA}$				
Ripple & Noise	$\leq 10\text{mA}_{\text{rms}}$				

Display		
Voltmeter	5 digits LCD display	
Ammeter	5 digits LCD display	
Setting resolution	1mV/1mA	
Reading resolution	1mV/1mA	
Setting accuracy (25±5°C)	Voltage	±(0.03% of reading + 10mV)
	Current	±(0.1% of reading + 0.1% of FS)
Reading accuracy (25±5°C)	Voltage	±(0.02% of reading + 5mV)
	Current	±(0.1% of reading + 0.1% of FS)
General		
Protection	Over load, over voltage, over current, over temperature and reverse polarity protections	
Panel lock	Provided	
Remote sense function	Maximum compensation voltage 5% of FS	
Battery charge	Lithium battery curve charge	
Interface	RS232 interface, Support SCPI commands	
	0-5V analog control	
	Optional RS485 interface, support ModBus	
	Optional RS232 to USB cable	
Memory	300 sets internal save, support save to USB flash driver	
Insulation	Between base and terminals: ≥20MΩ/500VDC Between base and AC line: ≥30MΩ/500VDC	
Operating environment	Indoor use Altitude: ≤2000m Ambient temperature: 0~40°C Relative humidity: ≤80% Installation category: II Pollution degree: 2	
Storage environment	-10°C~70°C, ≤70%RH	
Power source	AC220V±10%, 50/60Hz	
Accessories	Power cord x1, Operation manual x1, RS232 cable x1, Software CD x1	
Dimension(WxHxD)	215x89x412mm	
Weight	5.5kg	

Specifications (900W)

Model	PPS-6015	PPS-8011	PPS-12H75	PPS-15H60
Rated output (0°C~40°C)				
Voltage	0~60.5V	0~80.5V	0~121V	0~151V
Current	0~15.5A	0~11.5A	0~7.6A	0~6.1A
Power	0-900W	0-900W	900W	900W
O.V.P	0.1~64V	0.1~88V	0.1~132V	0.1~160V
O.C.P	0.1~17A	0.1~12A	0.1~8A	0.1~6.6A
Constant Voltage Operation				
Line regulation	≤0.01%+4mV			
Load regulation	≤0.1%+5mV			
Ripple & Noise(20Hz~20MHz)	≤2mVrms, 30mVpp		≤5mVrms, ≤50mVpp	
Recovery time	≤1.5ms (50% load change)			
Temperature Coefficient	≤100ppm/°C			
Constant Current Operation				
Line regulation	≤0.2%+3mA			
Load regulation	≤0.2%+5mA			
Ripple & Noise	≤10mArms			
Display				
Voltmeter	5 digits LCD display			
Ammeter	5 digits LCD display			
Setting resolution	1mV/1mA		10mV/1mA	
Reading resolution	1mV/1mA		10mV/1mA	
Setting accuracy (25±5°C)	Voltage	±(0.03% of reading + 10mV)		
	Current	±(0.1% of reading + 0.1% of FS)		
Reading accuracy (25±5°C)	Voltage	±(0.02% of reading +5mV)		
	Current	±(0.1% of reading + 0.1% of FS)		
General				
Protection	Over load, over voltage, over current, over temperature and reverse polarity protections			
Panel lock	Provided			
Remote sense function	Maximum compensation voltage 5% of FS			
Battery charge	Lithium battery curve charge			
Interface	RS232 interface, Support SCPI commands			

	0-5V analog control
	Optional RS485 interface, support ModBus
	Optional RS232 to USB cable
Memory	300 sets internal save, support save to USB flash driver
Insulation	Between base and terminals: $\geq 20\text{M}\Omega/500\text{VDC}$ Between base and AC line: $\geq 30\text{M}\Omega/500\text{VDC}$
Operating environment	Indoor use Altitude: $\leq 2000\text{m}$ Ambient temperature: 0~40°C Relative humidity: $\leq 80\%$ Installation category: II Pollution degree: 2
Storage environment	-10°C~70°C, $\leq 70\%$ RH
Power source	AC220V $\pm 10\%$, 50/60Hz
Accessories	Power cord x1, Operation manual x1, RS232 cable x1, Software CD x1
Dimension(WxHxD)	215x89x412mm
Weight	5.5kg

Архангельск (8182)63-90-72
Астана (7172)727-132
Астрахань (8512)99-46-04
Барнаул (3852)73-04-60
Белгород (4722)40-23-64
Брянск (4832)59-03-52
Владивосток (423)249-28-31
Волгоград (844)278-03-48
Вологда (8172)26-41-59
Воронеж (473)204-51-73
Екатеринбург (343)384-55-89
Иваново (4932)77-34-06

Ижевск (3412)26-03-58
Иркутск (395)279-98-46
Казань (843)206-01-48
Калининград (4012)72-03-81
Калуга (4842)92-23-67
Кемерово (3842)65-04-62
Киров (8332)68-02-04
Краснодар (861)203-40-90
Красноярск (391)204-63-61
Курск (4712)77-13-04
Липецк (4742)52-20-81
Киргизия (996)312-96-26-47

Магнитогорск (3519)55-03-13
Москва (495)268-04-70
Мурманск (8152)59-64-93
Набережные Челны (8552)20-53-41
Нижний Новгород (831)429-08-12
Новокузнецк (3843)20-46-81
Новосибирск (383)227-86-73
Омск (3812)21-46-40
Орел (4862)44-53-42
Оренбург (3532)37-68-04
Пенза (8412)22-31-16
Казахстан (772)734-952-31

Пермь (342)205-81-47
Ростов-на-Дону (863)308-18-15
Рязань (4912)46-61-64
Самара (846)206-03-16
Санкт-Петербург (812)309-46-40
Саратов (845)249-38-78
Севастополь (8692)22-31-93
Симферополь (3652)67-13-56
Смоленск (4812)29-41-54
Сочи (862)225-72-31
Ставрополь (8652)20-65-13
Таджикистан (992)427-82-92-69

Сургут (3462)77-98-35
Тверь (4822)63-31-35
Томск (3822)98-41-53
Тула (4872)74-02-29
Тюмень (3452)66-21-18
Ульяновск (8422)24-23-59
Уфа (347)229-48-12
Хабаровск (4212)92-98-04
Челябинск (351)202-03-61
Череповец (8202)49-02-64
Ярославль (4852)69-52-93

<https://twintex.nt-rt.ru/> || ttw@nt-rt.ru